

## Violoncello

What a great night

Hilltop Hoods  
arr. J. Messenger

♩ = 165

4

**A**

8

[illegible]

11

B

The bass line of 'The Rose Tree' is written in G major (one sharp) and 3/4 time. It begins with a treble clef and a key signature of one sharp (F#). The melody starts on G4, moves to A4, then B4, and continues with a series of eighth and quarter notes, including a triplet of eighth notes. The line concludes with a final G4 note.

15

The bass line of 'The Rose Tree' is written in G major (one sharp) and 2/4 time. It consists of three measures. The first measure contains a half note G2, a half note A2, and a quarter rest. The second measure contains a quarter note G2, a quarter note A2, a quarter note B2, a quarter note A2, and a quarter rest. The third measure contains a quarter note G2, a quarter note A2, a quarter note B2, a quarter note A2, and a quarter rest.

19

C

4

pizz.

2

The bass line is written on a single staff with a bass clef and a key signature of one sharp (F#). The melody consists of several measures, including a sequence of eighth and sixteenth notes, followed by rests and a final measure with a double bar line. The dynamic marking *mf* is placed below the staff.

28

arcc

D

[illegible]

36

E

The bass line is written on a single staff in bass clef with a key signature of one sharp (F#). It consists of four measures. The first measure has a whole rest. The second measure contains a half note G2 (marked with a 'v'), followed by a quarter note A2, and a half note G2 (marked with a 'v'). The third measure contains a half note F#2 (marked with a 'v'), followed by a quarter note E2, and a half note D2 (marked with a 'v'). The fourth measure contains a half note C2 (marked with a 'v'), followed by a quarter note B1, and a half note A1 (marked with a 'v').

40

[illegible]

43

The bass line of 'The Rose Tree' is written in G major (one sharp) and 2/4 time. It consists of two measures. The first measure contains a half note G2, a half note A2, a half note B2, and a half note C3. The second measure contains a half note D3, a half note E3, a half note F3, and a half note G3. The melody is written in the treble clef.

45 **F**

49

53 **G***f*

57



60

**H***mf*

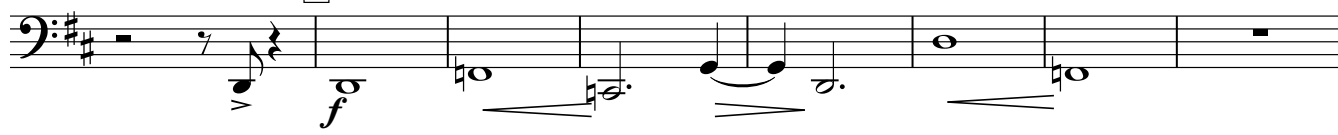
65

*f*

69

**I**

76

**J***f*

84

**K**

88

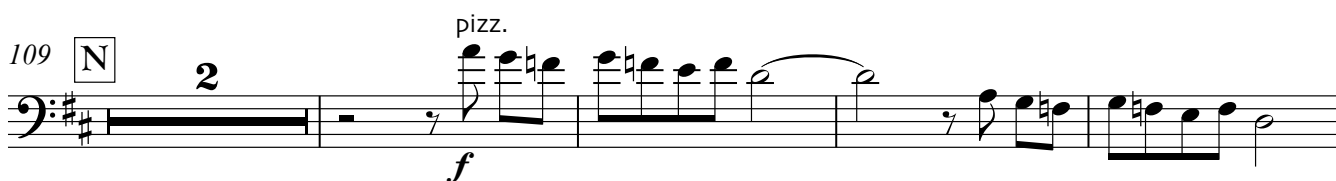


93 **L**

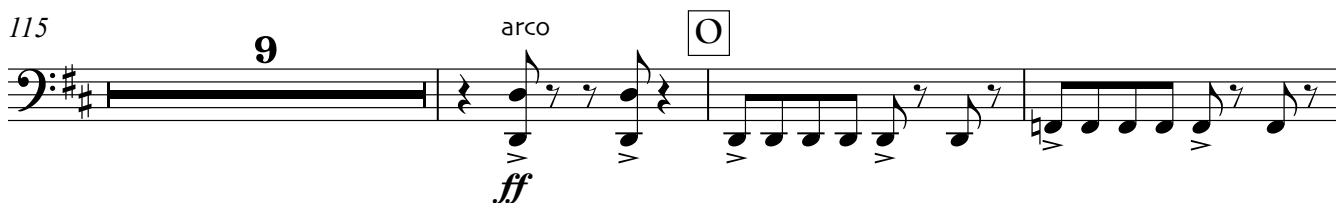
97

101 **M**

105

109 **N**

115



127



130

133 **P**

137

